

Jonathan Penney

ARCHITECTURAL TECHNOLOGIST

email: office@jon-penney.com
website: www.jon-penney.com
mobile: 07857 684 880
home telephone: 01433 623 974
location: Castleton, Hope Valley, Peak District

SUMMARY

A versatile & conscientious Architectural Technologist with excellent design and detailing skills and twenty five years experience working on construction projects in the healthcare, education and residential sectors.

EXPERIENCE

JON PENNEY ARCHITECTURAL SERVICES 2020 - present
Freelance Architectural Technologist (Revit LT & AutoCAD LT)

- Clients include:
 - Castle Owen Construction & Property Consultants, Sheffield
 - Innova Property Consultants, Wetherby, West Yorkshire
- Projects include:
 - Alteration & refurbishment projects for Higher Education buildings.
 - Assisted living housing projects.
 - Residential extensions and loft conversions.

BEAUMONT AND COWLING, SHEFFIELD 2015 - 2020
Architectural Technologist (AutoCAD Architecture)

- Projects included: Two storey extension to a hospital, providing a new sterile services facility, new operating theatre and eleven bed recovery bay. Contract value £8.5million (see projects 1).
- Conversion of a two storey warehouse and office building, into a new healthcare outpatients facility containing: reception areas, consulting rooms, treatment rooms and a new diagnostics suite incorporating MRI scanner, x ray and ultrasound facility. Contract value £4million (see projects 2).
- Two storey extension to a hospital, providing six new operating theatres and a new physiotherapy department. Contract value £14million.

Duties included:

- All activities associated with stage 4 (Technical Design), stage 5 Manufacturing & Construction) & stage 6 (Handover) of the RIBA Plan of Work, including the production of tender and working drawing packages, coordinating engineering consultants design information, coordinating specialist equipment fit out information, resolving site queries and RFI's, coordinating phasing of works, issuing architects instructions, snagging and de snagging.
- Ensuring compliance with all technical and performance standard requirements including HBN and HTM documents, Building Regulations, BREEAM etc.

ANCON BUILDING PRODUCTS 2012 - 2015

Design Draftsman

- Designing and detailing bespoke stainless steel masonry support systems and wind-posts for construction projects.
- Ensuring all structural calculations carried out.
- Preparing manufacturing drawings and schedules for manufacture of components.

BLUE SKY ARCHITECTS, STOCKPORT 2005 - 2011

Architectural Technologist (AutoCAD)

- Technical design and production of working drawing packages for new healthcare and education buildings, for contract values in the region of £6 million.
- Contract administration of JCT minor works contracts on school refurbishment projects.
- (see projects 3-4)

ADC ARCHITECTS, MANCHESTER 2000 - 2005

Architectural Technologist (ArchiCAD)

- City centre apartments, new housing developments, hotels and listed buildings.
- Producing architectural design and detailed drawings, specifications and tender documentation.
- Obtaining statutory approvals, attending site and resolving technical issues.
- (see projects 5-6)

WATTS & PARTNERS (BUILDING SURVEYORS), MANCHESTER 1998 - 2000

Architectural Technician (AutoCAD)

- Housing refurbishment projects, residential conversions, extensions and alterations to schools.
- Carrying out measured building surveys & producing existing plans, elevations and sections.
- Producing design and detailed drawings, specifications and tender documentation.

1996-1998 Tameside Borough Council, Architectural Services, Ashton under Lyne

1995 HSB Partnership (Building Surveyors) Manchester

1994-1995 Yavan Architecture, Chorlton, Manchester

1993-1994 Najib Gedal Architect, Stockport

QUALIFICATIONS

NEBOSH NATIONAL CERTIFICATE IN CONSTRUCTION HEALTH AND SAFETY

Central Manchester College 2007

HND BUILDING STUDIES

Stockport College 1992-1994

NATIONAL DIPLOMA IN CONSTRUCTION

Central Manchester College 1988-1990

INTERESTS

Walking in the Peak District, playing and listening to music, swimming, reading and cooking.



PROJECTS 1

Architect: Beaumont & Cowling

Description

Two storey extension to a hospital, providing at ground floor, new sterile services department and at first floor, a new operating theatre and eleven bed recovery bay

Approx contract value £8.5 million

Responsibilities

Working drawing production including:

- General Arrangement Plans
- General Arrangement Sections
- Fire Plans
- Fitted Furniture Plans
- Finishes Plans
- Setting Out Plans
- Elevations
- External wall details
- Fire encasement details
- Structural movement joint details
- Partition & internal lining details
- Lead lining details
- Roof details
- IPS details
- Deflection head details
- Door schedules
- Sanitary schedules
- External works details

Coordinating of engineering consultants design information.

Coordination of specialist equipment fit out information.

Checking and commenting on Contractor design specialist fabrication drawings for status A approval.

Resolving site queries & RFI's.

Coordinating phasing of works.

Issuing architect instructions.

Snagging and de snagging.



PROJECTS 2

Architect: Beaumont & Cowling

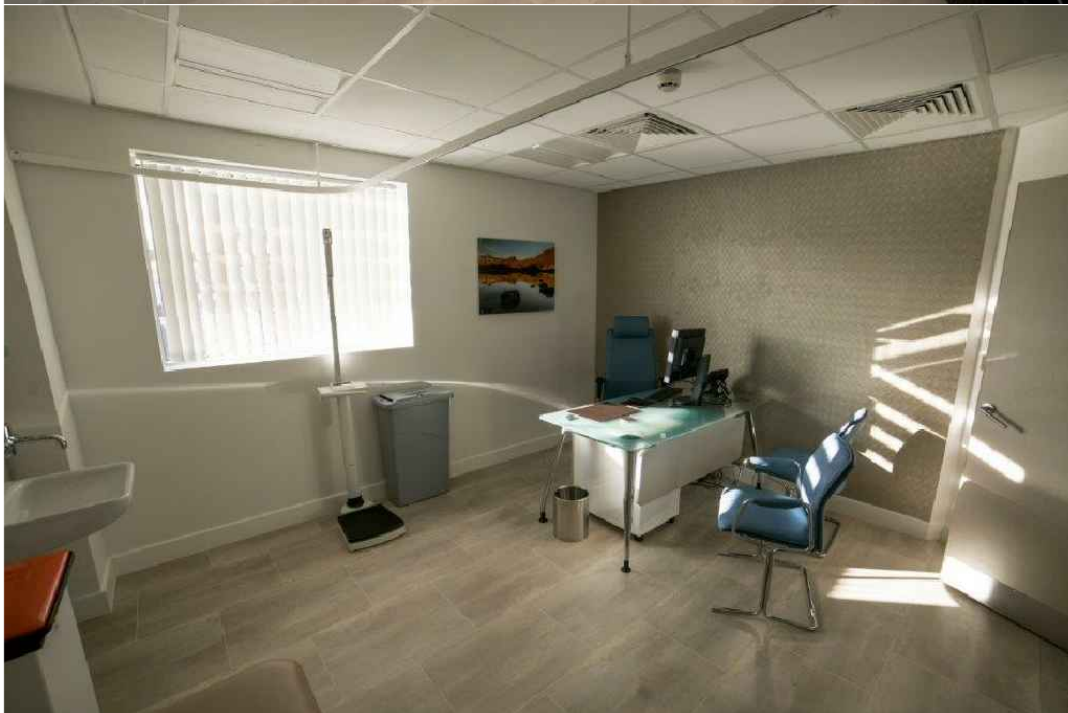
Description

Conversion of existing two storey warehouse and office building, into a new private healthcare outpatient's facility containing reception areas, consulting rooms, treatment areas, and a new diagnostics suite incorporating MRI, x-ray and ultrasound facilities.

Approx contract value £4 million

Responsibilities

Working drawing production including:
General Arrangement Plans
General Arrangement Sections
Fire Plans
Fitted Furniture Plans
Finishes Plans
Setting Out Plans
Elevations - Curtain Walling
Partition & internal lining details
Deflection head detail
Feature staircase details
Door schedules
Sanitary schedules





PROJECTS 3

Architect: Blue Sky Design Group

Description

Glodwick Primary Care Centre

Approx contract value £6.5 million

Responsibilities

Working drawing production including:

GA Plans & Sections

External fabric details

Substructure detailing

Fire Plans

Fitted Furniture Plans

Finishes Plans

Setting Out Plans

Elevations

Partition & internal lining details

Precast concrete stair details

Door & Sanitary schedules



PROJECTS 4

Architect: Blue Sky Design Group

Description

Chadderton Wellbeing Centre

Approx contract value £6 million

Responsibilities

As above



PROJECTS 5

Architect: ADC Architects

Description

Construction of 14nr 4 bed timber frame houses

Approx contract value £1.8 million

Responsibilities

Working drawing production including:

GA Plans & Sections

Elevations

External fabric details

Substructure detailing

External works

Finishes Plans

Setting Out Plans

Coordinating of engineering consultants design information.

Obtaining Building Regulations approval



PROJECTS 6

Architect: ADC Architects

Description

City Centre mill conversion creating 90 apartments, 12 live/work units and commercial office accommodation

Approx contract value £7.5 million

Responsibilities

Carrying out site surveys.

Working drawing production including:

GA Plans & Sections

Setting Out Plans

Internal fit out detailing

Scheduling internal elements, components and finishes.

Internal and external drainage design.

Detailing external balconies and bridges

Detailing of new penthouse apartment extension on existing flat roof

External works

Coordinating of engineering consultants design information.

